

NEPA *inclusive*

**Creating and Supporting
Inclusive & Sustainable Lives
for People with Disabilities**

WWW.NEPAINCLUSIVE.ORG



MISSION

To help create and support inclusive and sustainable lives for people with disabilities.

We believe people with disabilities should live where they want, with who they want, and in the way they want, and that they can choose to work in an area of their interest at a job of their choosing in their community. Both work and living support services are customized and delivered to support the individual in the manner they choose.

VISION

We envision a society where people with disabilities are fully engaged in their communities.

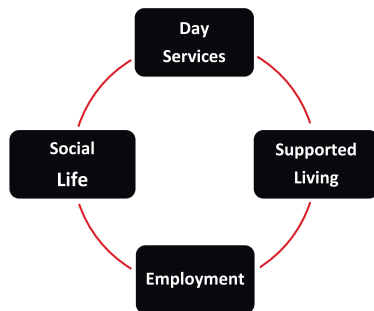
We accomplish this by serving as a Provider of Services with the PA Office of Developmental Programs (ODP) IDD Waiver program by offering a variety of community-based services through that system. These services include In-Home and Community Supports (IHCS), Companion Services, Community Participation Supports (CPS), Supported Employment, Housing Transition, and Tenancy Sustaining Services, Support Brokering, and Benefits Counseling.

VALUES

Self-Determination
Empowerment Respect
Personal Choice
Inclusion Civil Rights

We also provide Employment Services through the PA Office of Vocational Rehabilitation (OVR) for PA OVR Pre-Employment Transition Services (PETS) to high school students and Supported Employment for adults.

In addition, we have developed various other services designed to help fill in the blanks for youth and adults with disabilities, including our SMART Tech Resource Center, Transitional Academy Social Club, and the Inclusive Rental Assistance Program (IRAP). Our affiliation with Turn To Us Autism Resource Centers and the Spectrum Sensory Gym allows us a way to offer more services to more people.



NEPA Inclusive Service Model

SERVING

Berks, Bucks, Carbon, Columbia, Lackawanna, Lehigh, Luzerne, Monroe, Montgomery, Northampton, Northumberland, Pike, Schuylkill, and Wyoming Counties.

TRANSITION *inclusive*

For High School Students

Transitional Employment services are offered directly with school districts by contractual agreements and as a vendor with the PA Office of Vocational Rehabilitation (OVR) to provide employment-development services for high school students. Our services are blended as a strategy pointing towards the vocation of the individual's choice upon graduation.

Services Include

Paid Work Experiences (PWE)	Self-Advocacy
Community Work Instruction & Experiences	Independent Living Skills
Job Shadowing	Workplace Readiness Training
Discovery Profiles	Resume Building
Customizable Employment	Professional Career Experience
Job Finding and Job Coaching	Professional Connections Foundations
Travel Training	

TRANSITION ACADEMY SOCIAL CLUB

The Transition Academy Social Club is a fun and innovative skill-building program focused on self-advocacy, independent living skills, and workplace readiness training for high school students ages 14 and up. The program consists of three modules containing an average of ten lessons. Each lesson includes a lecture, discussion, and interactive activities.

Refreshment will be provided, and all students will receive a Course Kit and a T-Shirt!



Program Goals

- Increase Self-Advocacy • Promote Independent Living • Workplace Readiness
- Build Stronger Knowledge and Skills • Increase Individual's Confidence
- Give a Sense of Belonging Within the Community • Develop Friendships

We envision a society where people with disabilities are fully engaged in their community.



EMPLOYMENT SERVICES FOR ADULTS



NEPA Inclusive helps individuals learn the skills they need to work at the job of their choosing, helps in the job-seeking process, orientation, early-stage intensive job coaching, and ongoing job coaching support. We offer Discovery Customized Employment and Competitive, Integrated, and Customizable employment services, where the pay rate is always at least the minimum wage and oftentimes the same as someone else doing the same job. It is our goal that the individual finds the right position.

In some cases, we recommend an Employment Profile be performed to develop a baseline for employment and use this profile when beginning job development services.

Our adult Job Development services include Job Finding and Job Coaching as a Vendor through the Office of Vocational Rehabilitation (OVR) and Supported Employment through the ID Waiver system.

Services Include

Employment Profiles
Career Assessments
Job Finding / Coaching
Ongoing Supported Employment
Community-Based Work Assessments
Discovery Profiles
Customized Employment
On-the-Job Training
Benefits Counseling

Benefits Counseling

If you receive Social Security disability benefits (SSDI/SSI) and want to work — chances are you're wondering how that extra income will affect your benefits.



- **Will my monthly benefit change?**
- **Will my benefit immediately stop?**
- **Will I lose my Medicare or Medicaid?**

Benefits Counseling will explain how earnings from work could affect your SSI/SSDI benefits and help put your mind at ease!

Contact us at 570-947-6372 to see if Benefits Counseling can help you.

NEPA Inclusive is a Vendor for the Office of Vocational Rehabilitation (OVR) for adult services, including Community Based Work Assessments and Job Finding contracts (called Performance Based Job Coaching), and also for the Pre-Employment Training Services (PETS) program for High School Students starting at age 14. Contact OVR to inquire about NEPA Inclusive helping you in these areas or call our office at 570-947-6372

LIVE *inclusive*

DAY AND SUPPORTED LIVING SERVICES

Where someone lives is a very personal choice. Our interest lies in helping support the person to live where and with whom they want, and with the support they need to remain inclusive in their community. We offer a variety of day and supported living services, such as Companion Services, In-Home and Community Habilitation, and Respite — all designed to help the person achieve their goals and the social life they choose.

We also believe inclusive living requires long-range planning. That's why transitioning from living with family to a Supported Living arrangement takes time. We want to be there every step to ensure that the individual is always supported in the chosen living arrangement.

Supported living can include living in their own home or apartment with or without a roommate or living with family. These services work on independent living skills, socialization, natural supports, and concierge services such as attending appointments.

Services Include:

- ✓ In-Home & Community Supports
- ✓ Companion Services
- ✓ Community Participation Supports
- ✓ Supported Employment
- ✓ Deaf Services with ASL
- ✓ Day Services
- ✓ Inclusive Rental Assistance (IRAP)
- ✓ Housing Transition & Tenancy Sustaining Services
- ✓ Support Brokering for Self-Directing
- ✓ Social Activities

Housing Transition & Tenancy Sustaining Services:

Finding An Apartment: We help the people we support in the search for the right apartment in the right location.

Applying For It: We help with the application process.

Finding Supports: We help people who live independently find the supports they need to live safely and inclusively.

Maintaining: We will help with the day-to-day tasks of upkeep in a new apartment.

Inclusive Rental Assistance Program (IRAP):

Beginning in 2020, with the help of a grant awarded to NEPA Inclusive from the Robert H. Spitz Foundation administered by the Scranton Area Community Foundation, we have been able to start helping people with disabilities live in affordable housing in safe areas within the community by paying a percentage of their rent monthly. Through this program, we can help people with disabilities reach their goals of independence and inclusivity.



NEPA Inclusive is a Provider of Services with the PA Office of Developmental Services for the Intellectual and Developmental Disability (IDD) Waiver program. Contact your local county office of disabilities to inquire how we can work with you to live a truly inclusive life or call our offices at 570-947-6372.

The SMART Tech Resource Center and Drop-In Center

Powered By AllOne Foundation

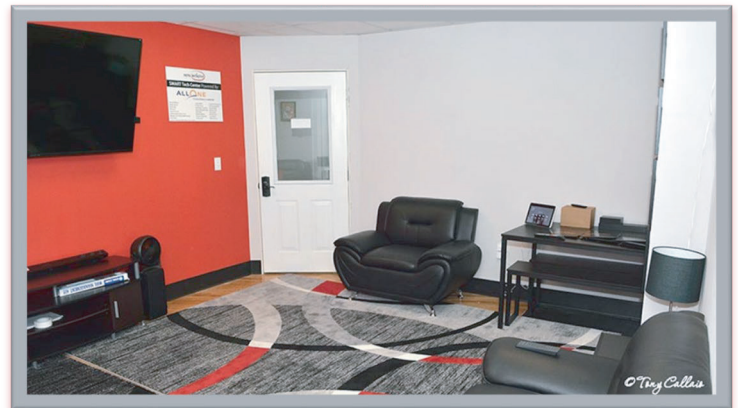
Located at the NEPA Inclusive Headquarters in Pittston, this comfy home-like center is a place for people with disabilities and the general public to 'drop in' to seek short-term socialization and assistance in many areas of support and advocacy.

Come hang out, watch tv, play board and video games, listen to music, and build friendships during organized social nights.

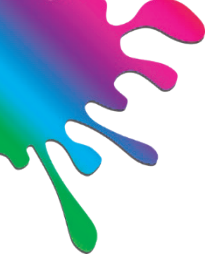
- Assistance Finding and Applying for Jobs
- Writing and Updating Resumes
- Searching for Apartments and Subsidized Related Programs
- Applying for Food Bank Assistance
- Meet with Staff
- Host Meeting SMART Technology – Alexa/Google Home to Activate Devices such as Smart Light Bulbs and Light Switches, Alarms, Security Systems, Thermostats, TVs, and Doorbells
- Check out SMART Tech Items from the Lending Library

"NEPA Inclusive helped me out 100%. You are a wonderful job coach and a great support system who has helped me keep my job for almost a year now."

- Kaley



22 East Street, Pittston, PA 18640



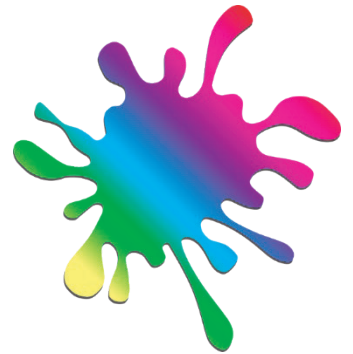
Autism Resource Center and SPECTRUM Sensory Gym

NEPA Inclusive announces a new and exciting affiliation with Turn To Us, Autism Resource Center, located in Carbon County, PA. Turn To Us operates various Autism Resource Services and SPECTRUM Sensory Gym, a specially designed space to help children with sensory issues learn to regulate their negative reactions to external stimuli by developing coping skills for these experiences. Children interact with their parents or caregivers while working on skills and goals in a fun and encouraging environment.

The SPECTRUM Sensory Gym is located in the Nesquehoning and Carbon County area and is open to the public.

SENSORY GYM BENEFITS

- Calming Effects
- Stimulation
- Socialization
- Improved Focus
- Motor Skills Development
- Cognitive Development
- Sensory Development



For more information and to
book sensory gym time, visit
www.TurnToUsInc.org

The SPECTRUM Sensory Gym was made possible by
St. Luke's University Health Network and AllOne Foundation.



46 West Catawissa Street, Nesquehoning, PA 18240

"Inclusion works to the advantage of everyone. We all have things to learn, and we all have something to teach."

- **Helen Henderson**



Visit One of our Inclusion Centers to learn more:

Allentown Inclusion Center

961 Marcon Boulevard, Suite 110, Allentown, PA 18109

Pocono Inclusion Center

528 Seven Bridge Road, Suite 301, East Stroudsburg, PA 18301

Carbon/Schuylkill Inclusion Center

46 West Catawissa Street Nesquehoning, PA 18240

Pittston Inclusion Center and Headquarters

22 East Street, Suite 3, Pittston, PA 18640

Reading Inclusion Center

237 Court Street, Suite 303 Reading, PA 19601

Administrative Office

22 East Street, Suite 3
Pittston, PA 18640

Mailing Address

P. O. Box 964
Pittston, PA 18640

Phone: 570-947-NEPA (6372)

Email: info@nepainclusive.org

www.nepainclusive.org